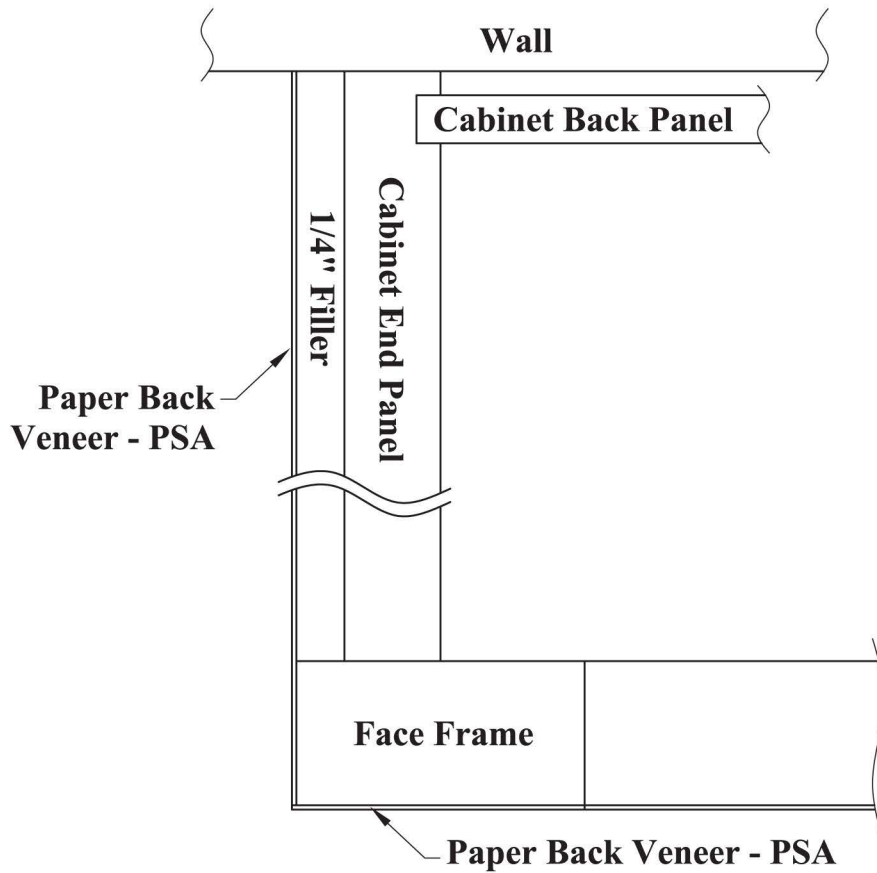
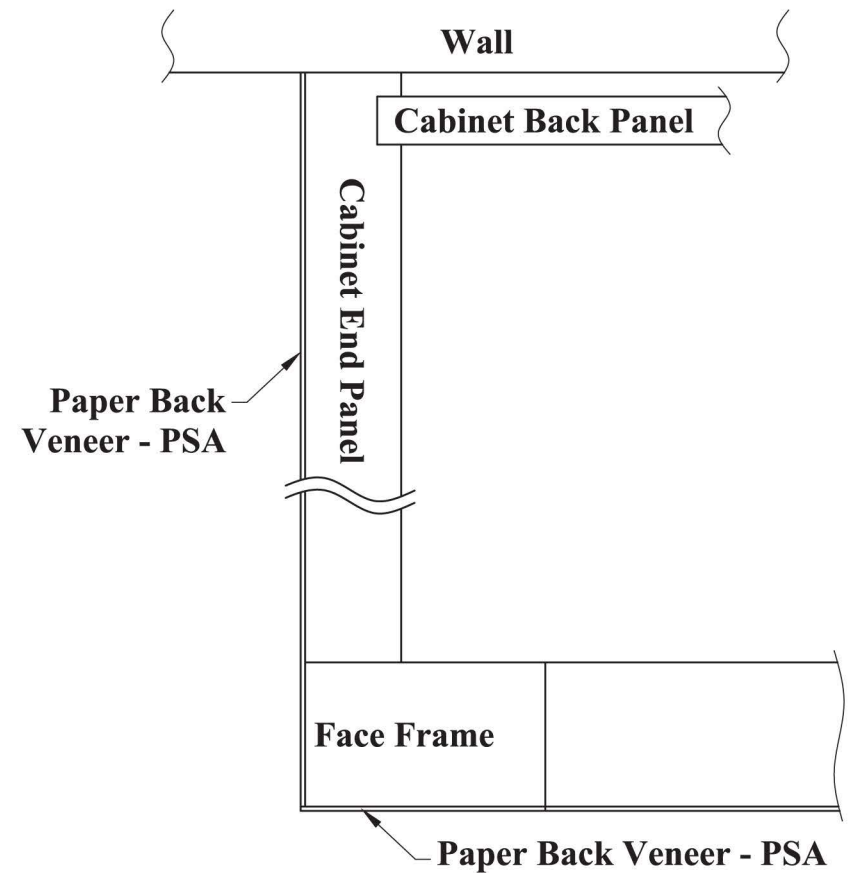


Refacing Method 101

Shown with Cabinet Scribe Kept



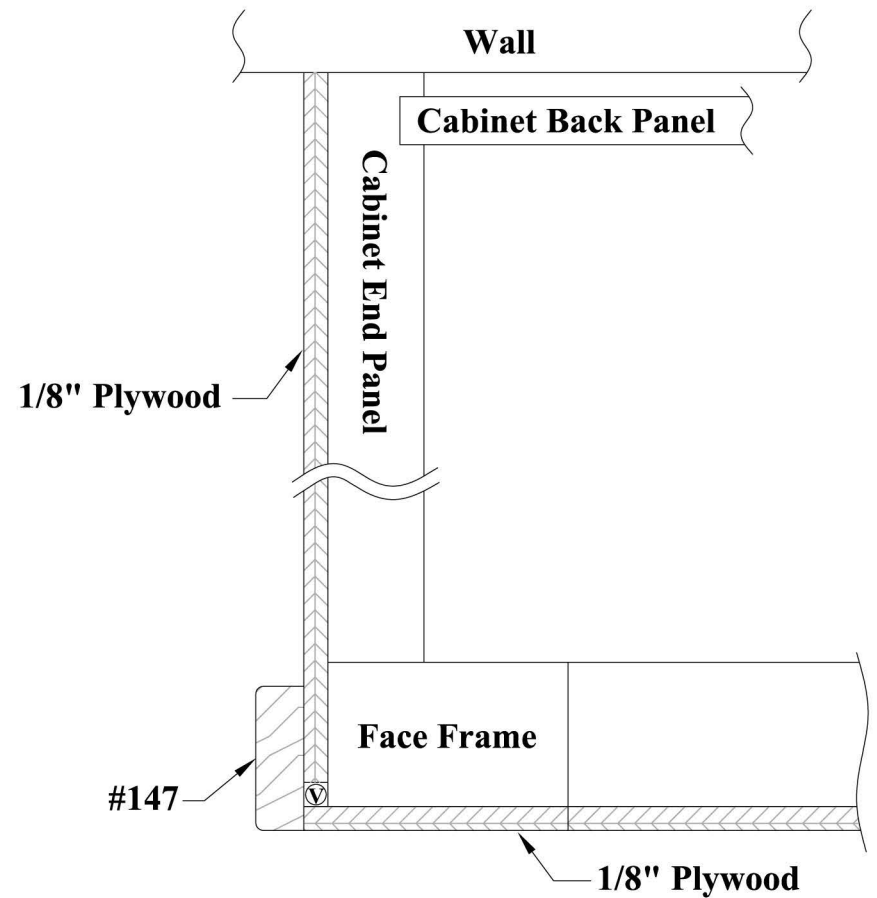
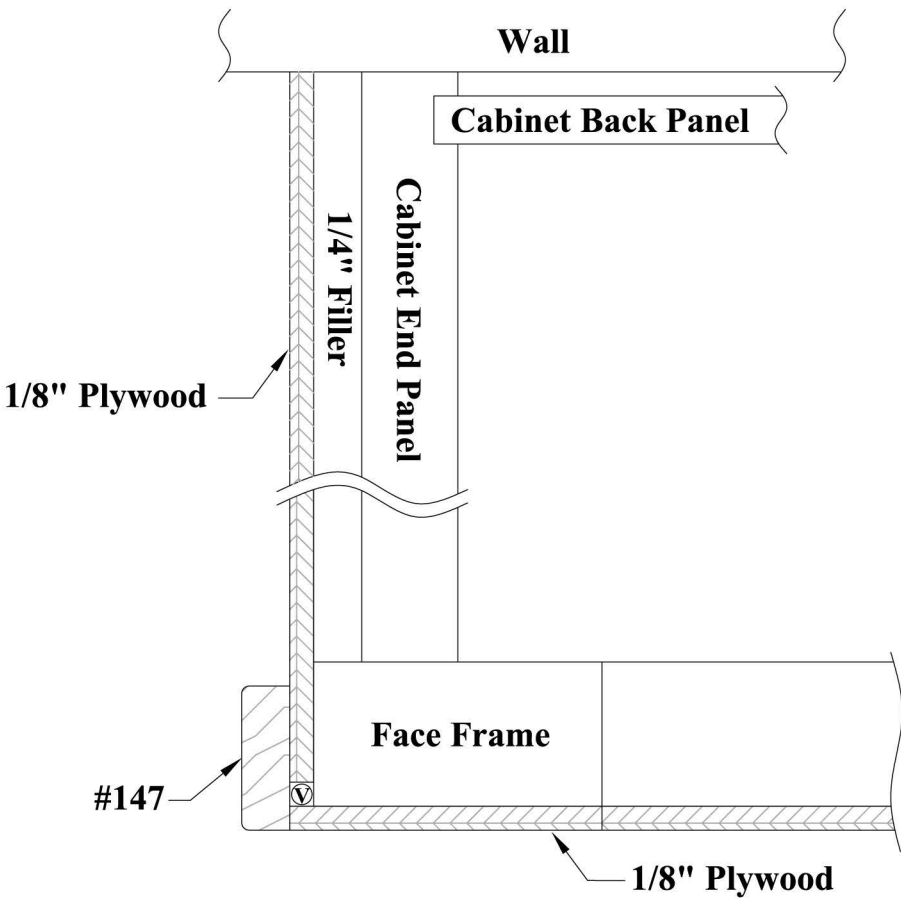
Shown with Cabinet Scribe Removed



Refacing Method 102

Shown with Cabinet Scribe Kept

Shown with Cabinet Scribe Removed



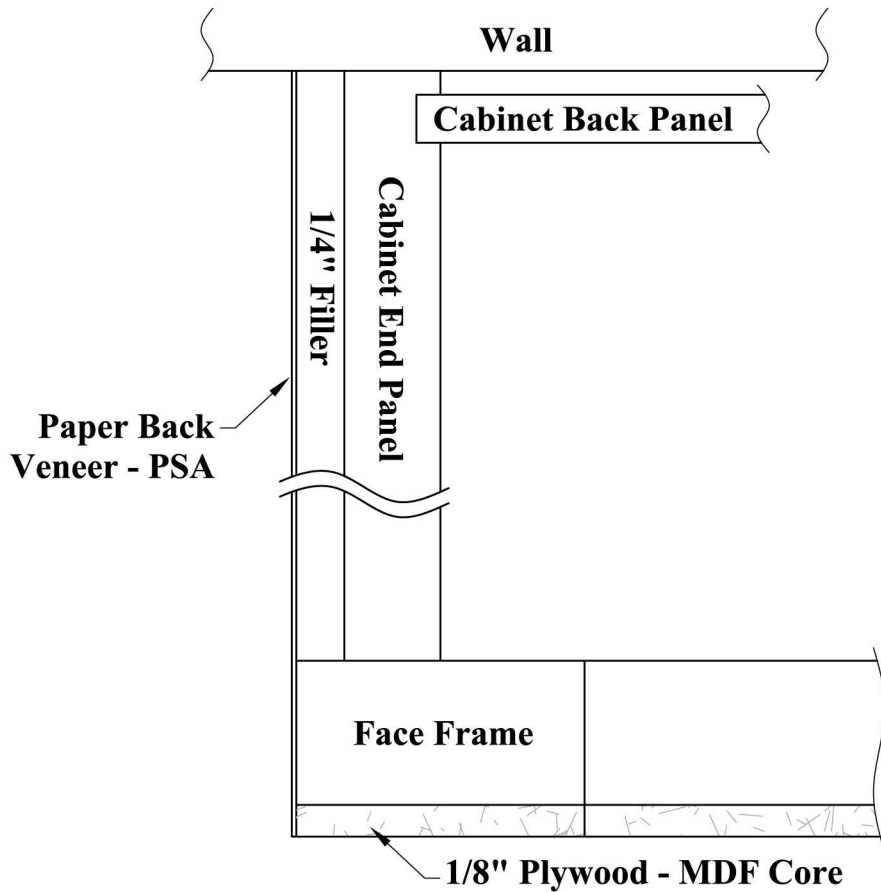
Ⓟ -Void behind the #147 molding may be a result of maximizing the yield of side material.

Ⓟ -Void behind the #147 molding may be a result of maximizing the yield of side material.

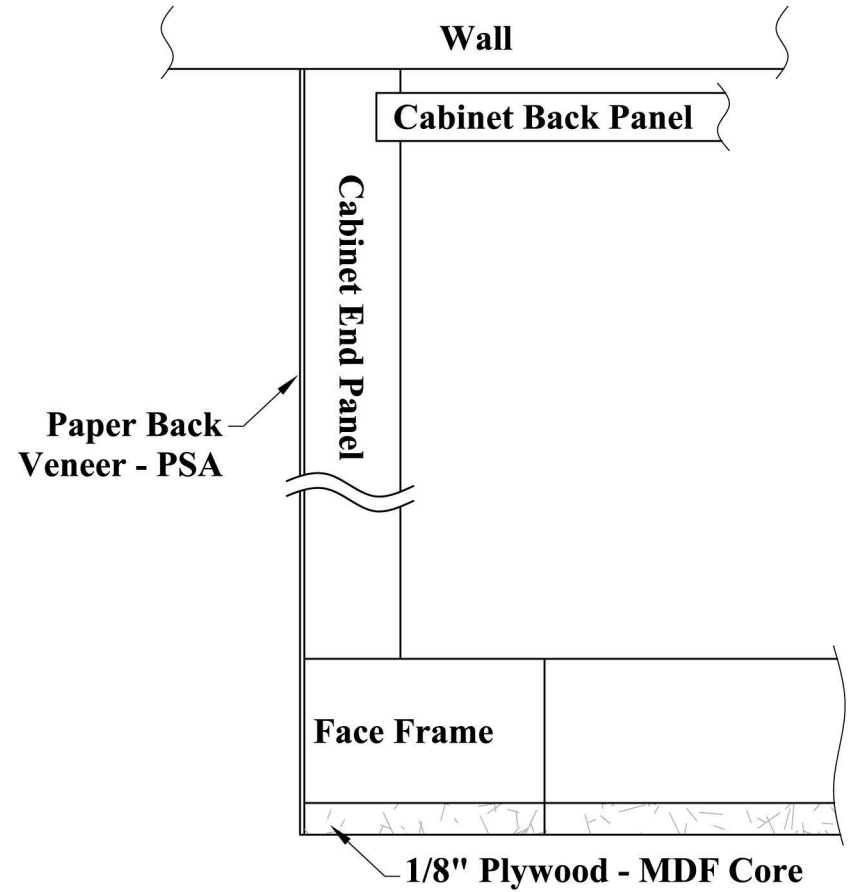


Refacing Method 103

Shown with Cabinet Scribe Kept

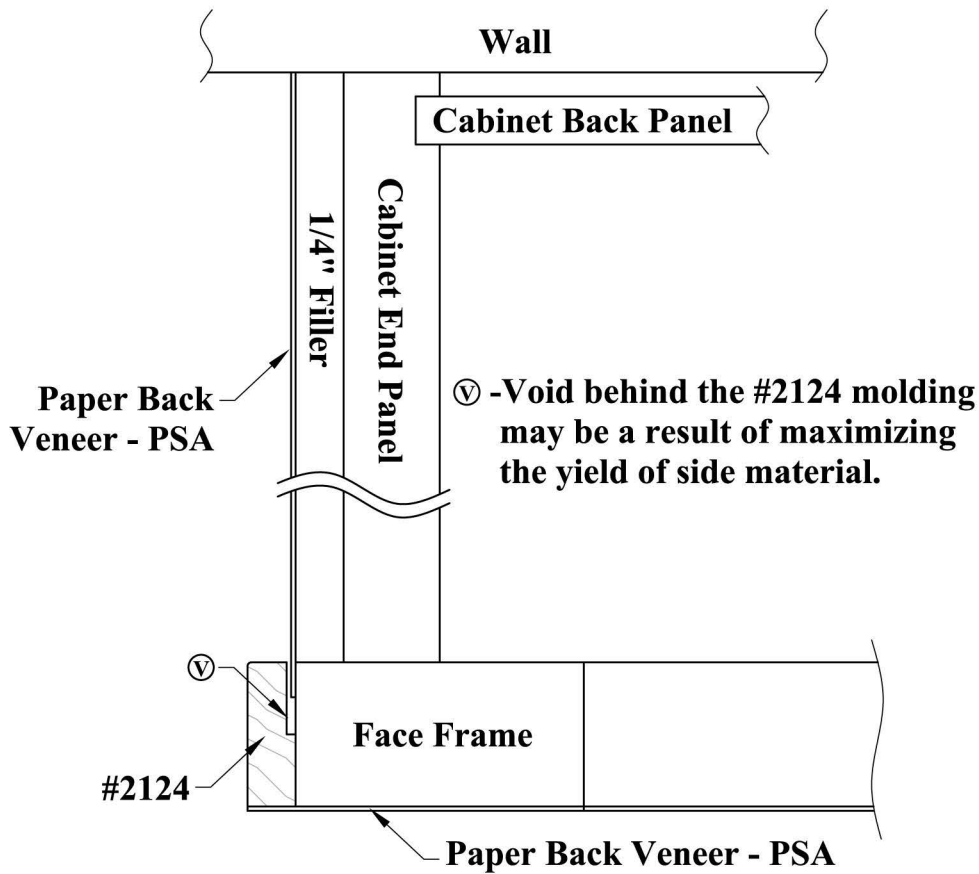


Shown with Cabinet Scribe Removed

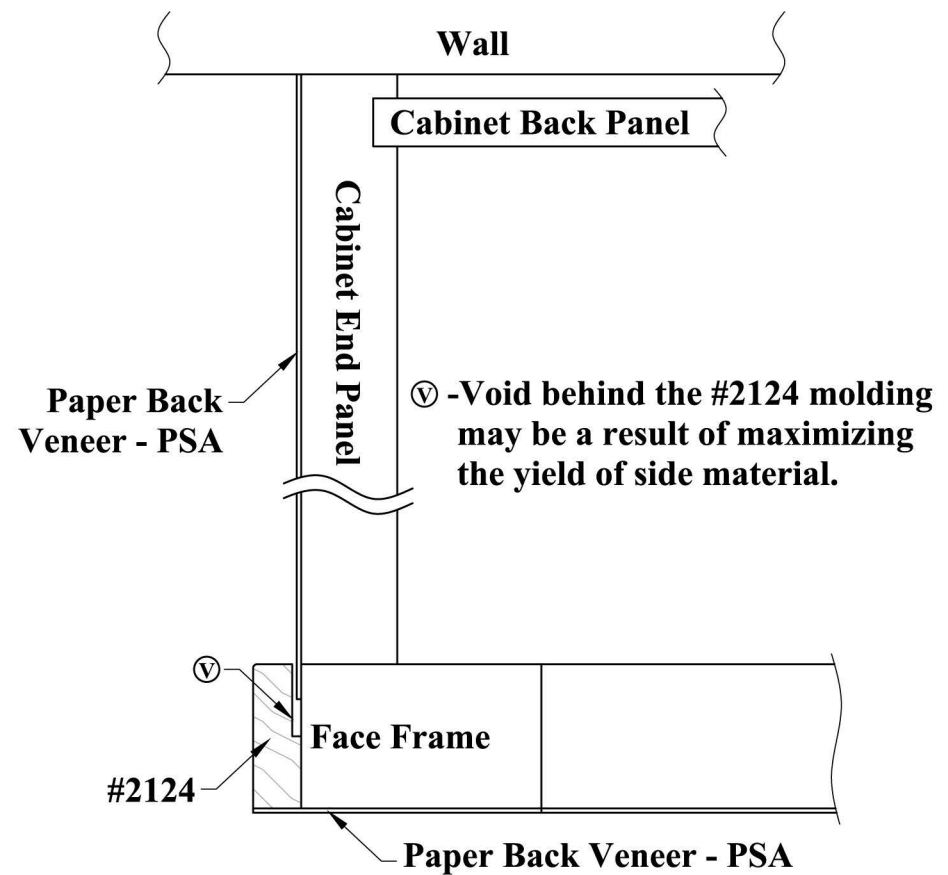


Refacing Method 104

Shown with Cabinet Scribe Kept



Shown with Cabinet Scribe Removed

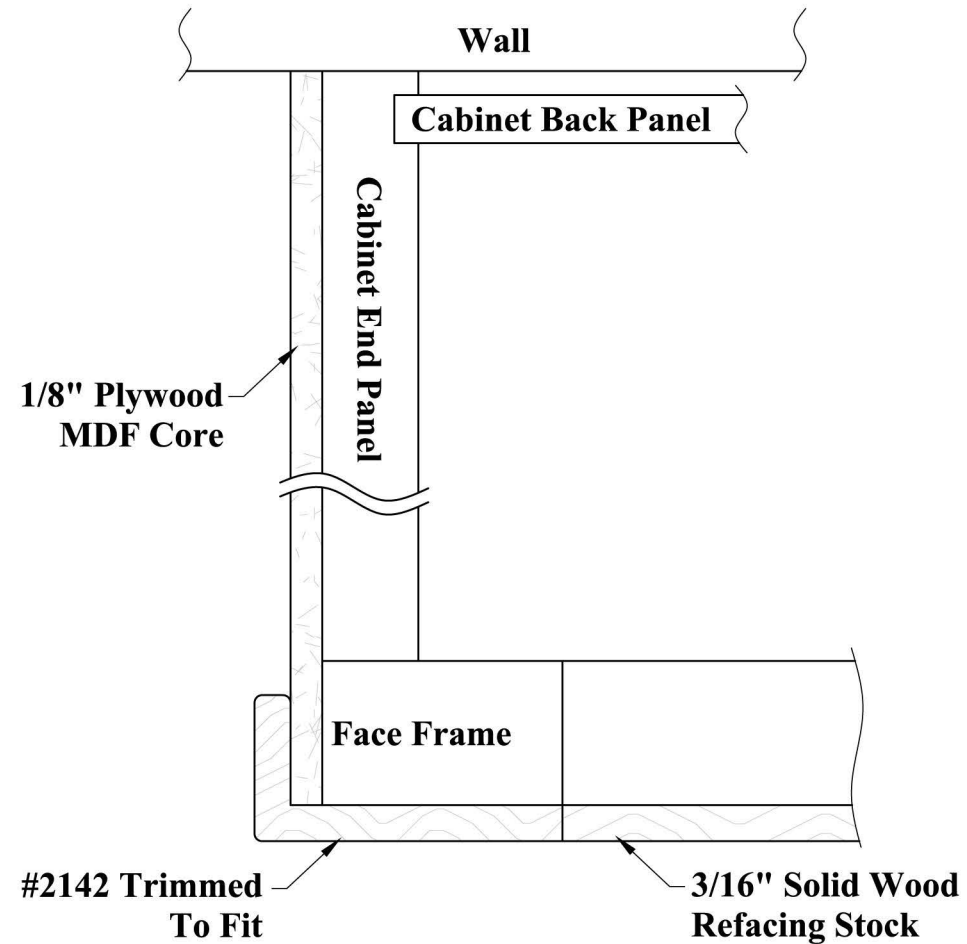
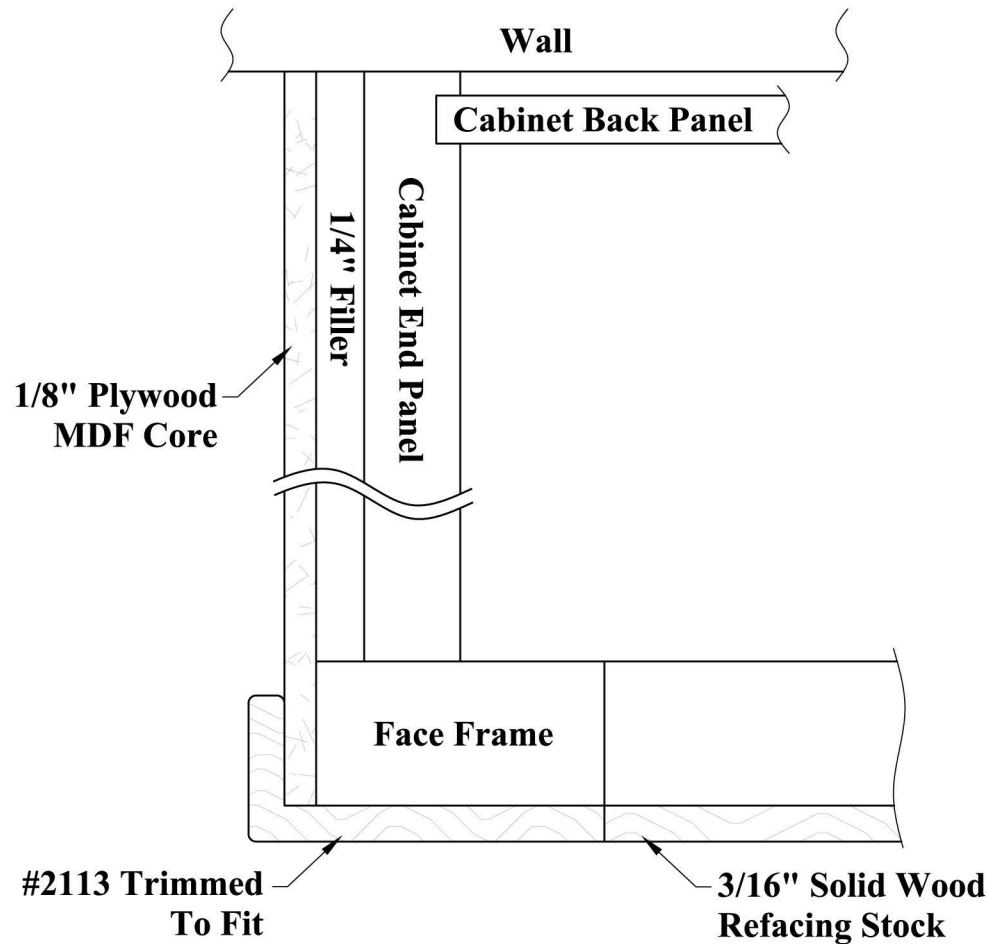




Refacing Method 105

Shown with Cabinet Scribe Kept

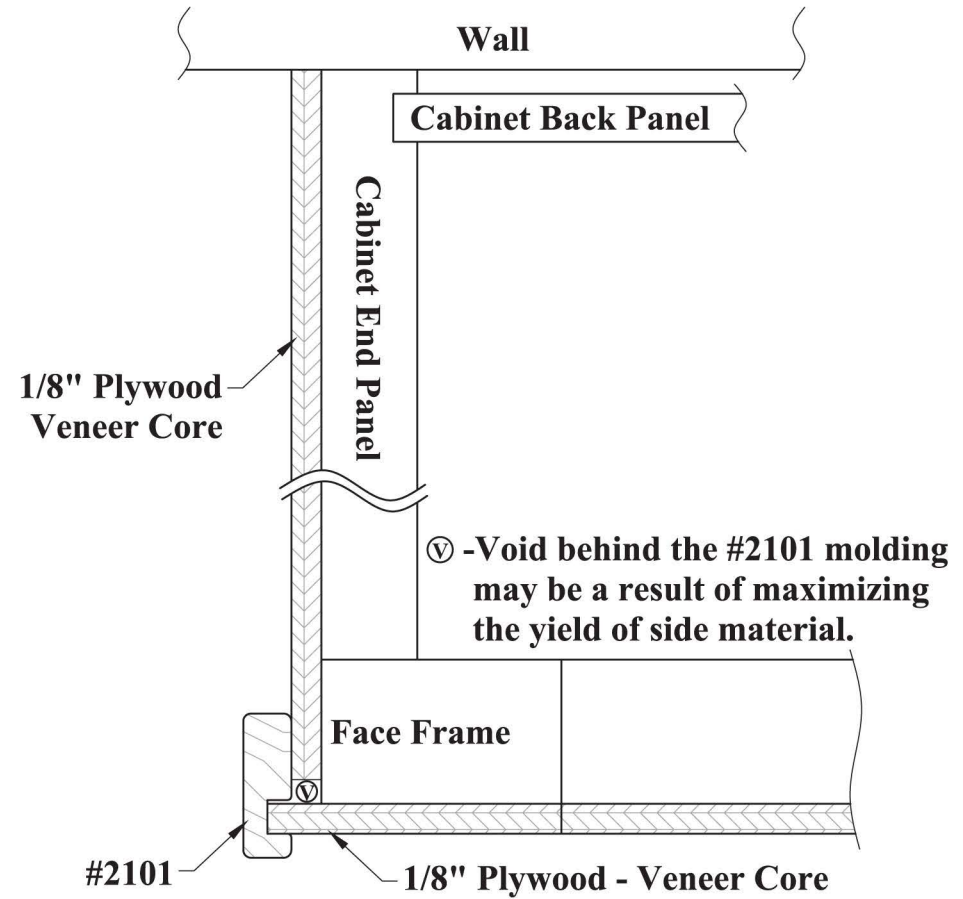
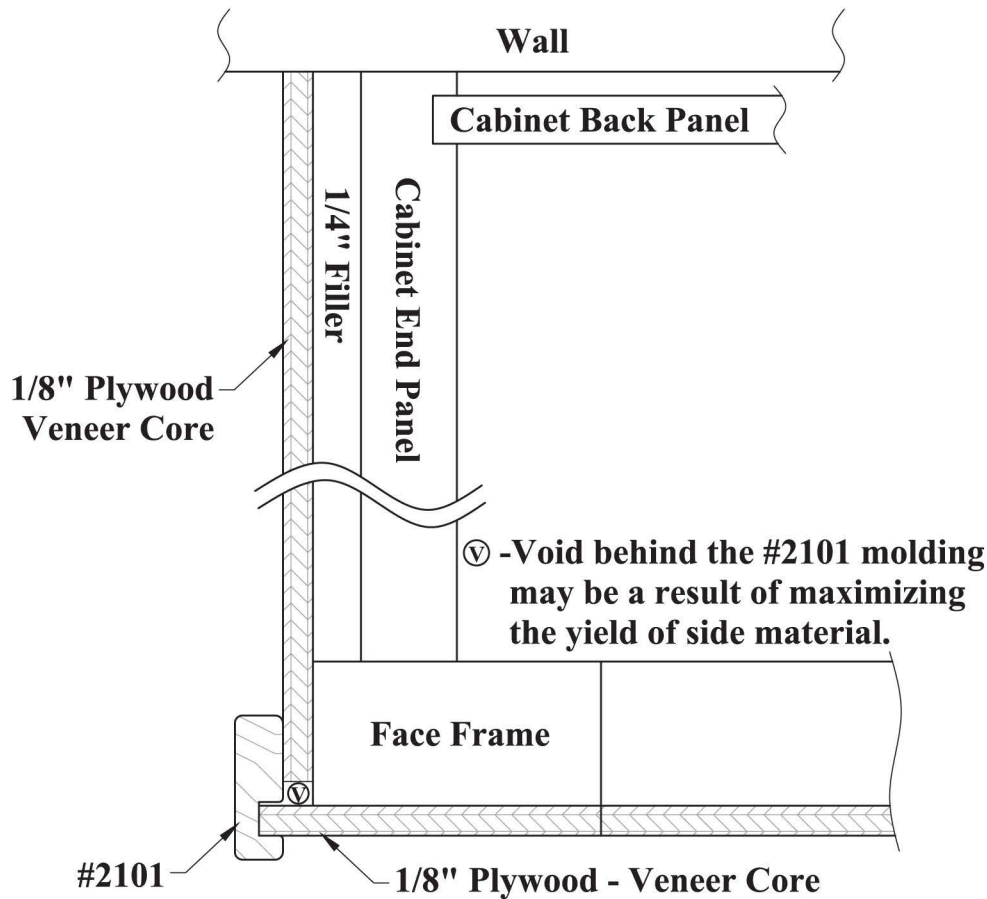
Shown with Cabinet Scribe Removed



Refacing Method 106

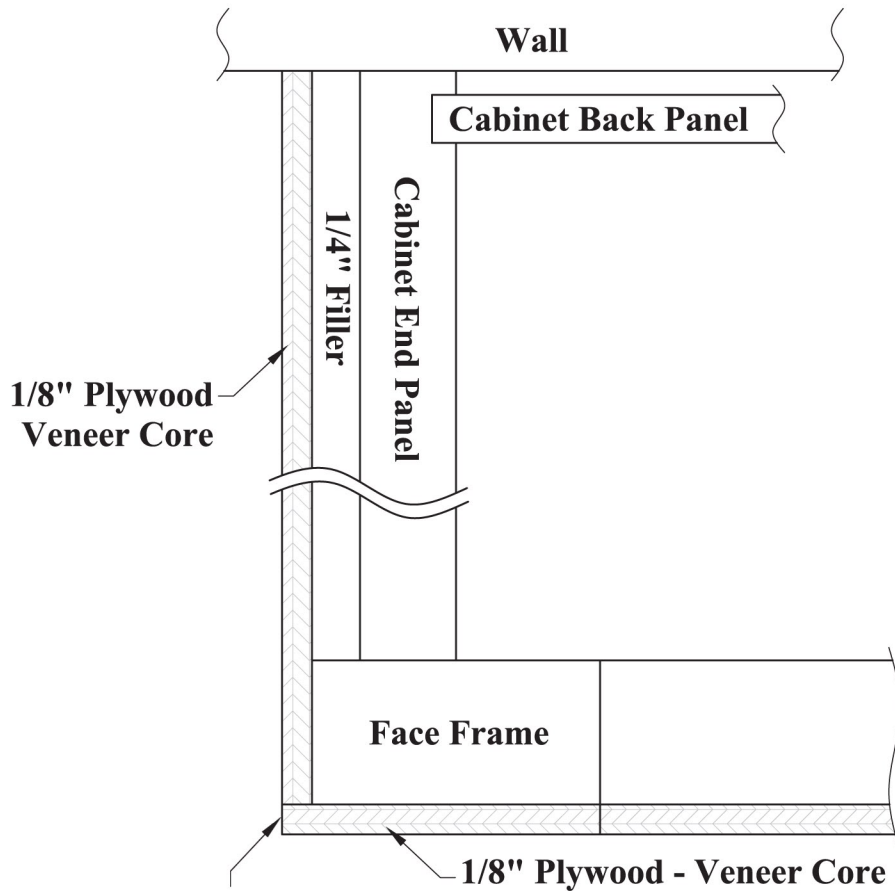
Shown with Cabinet Scribe Kept

Shown with Cabinet Scribe Removed



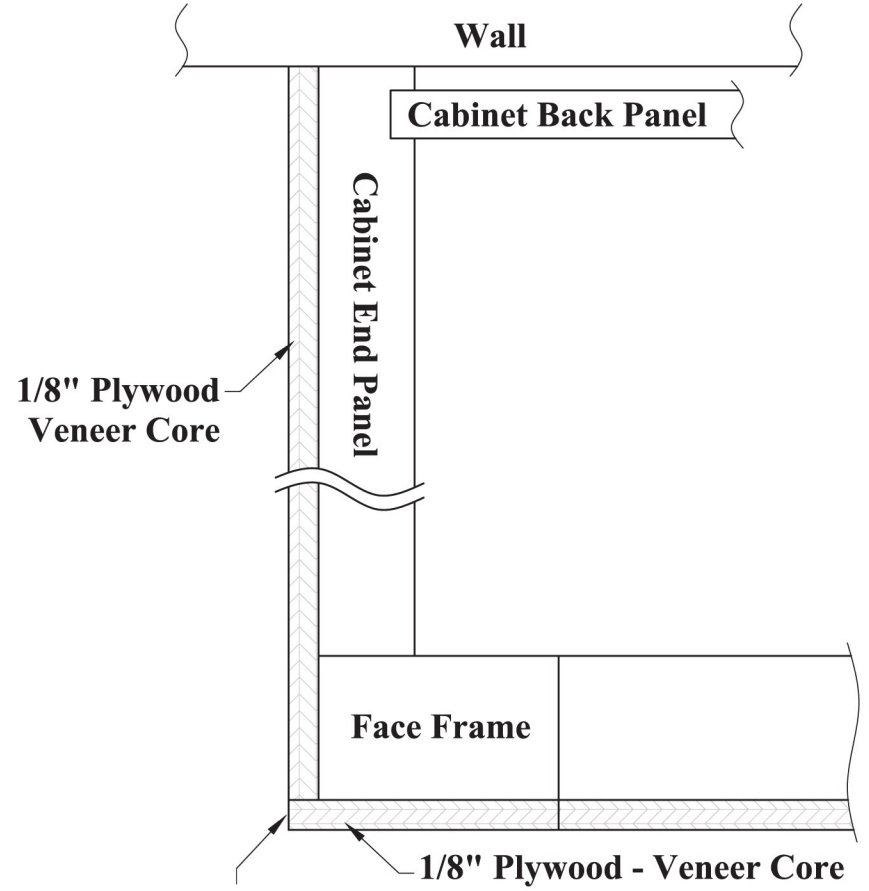
Refacing Method 107

Shown with Cabinet Scribe Kept



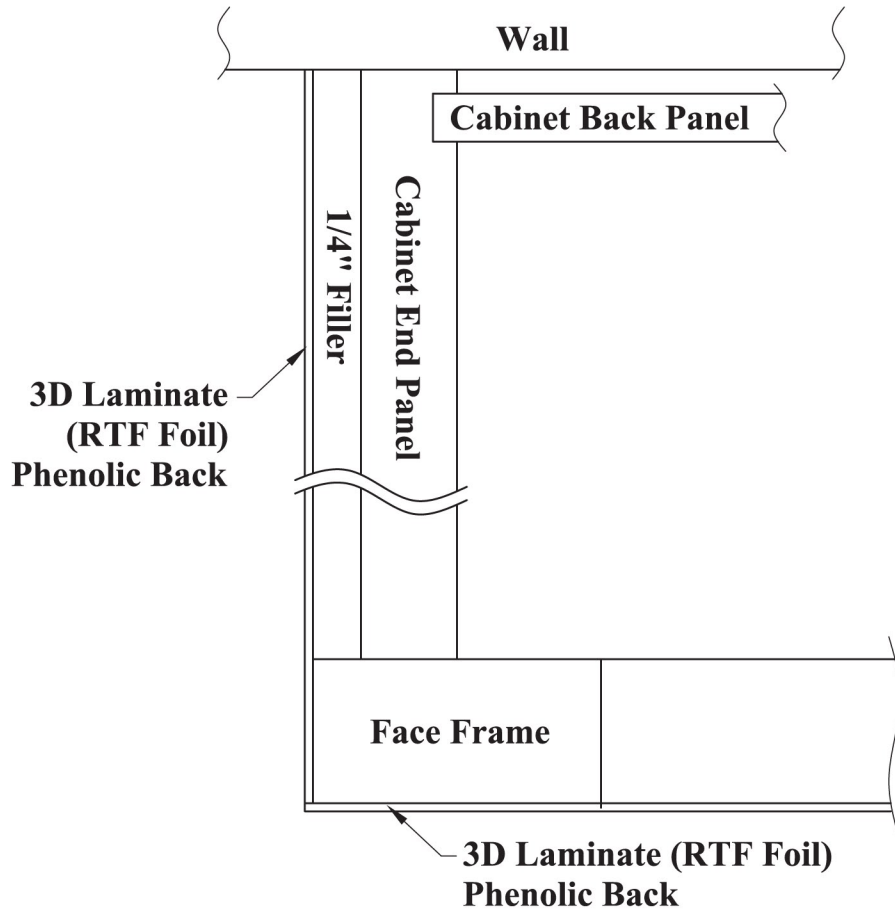
Exposed end is sanded and finished after installation

Shown with Cabinet Scribe Removed

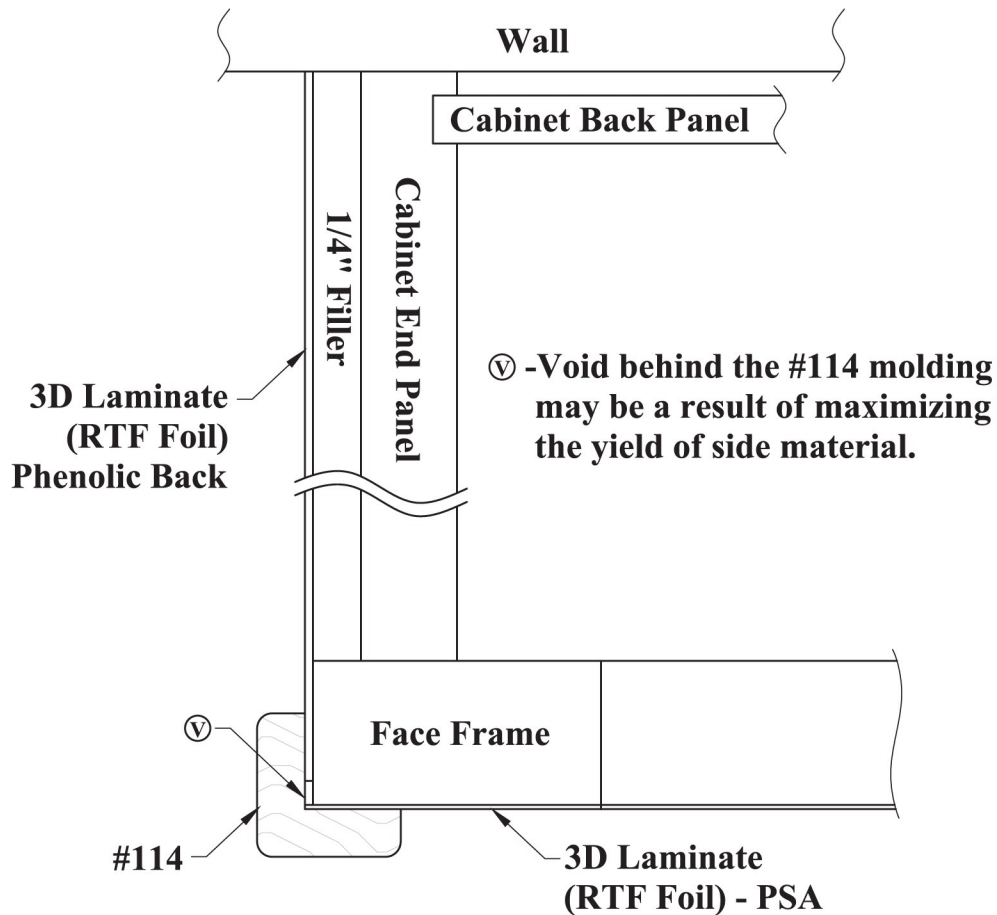


Exposed end is sanded and finished after installation

Shown with Cabinet Scribe Kept



Shown with Cabinet Scribe Kept



Shown with Cabinet Scribe Kept

