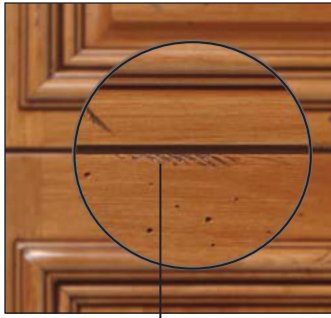
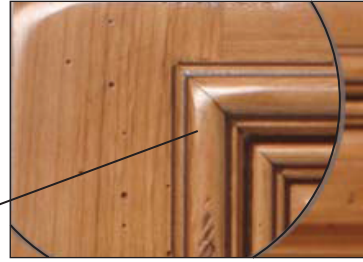


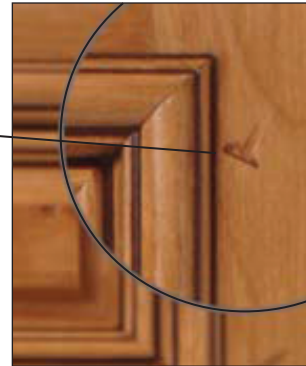
Simulated Distressing



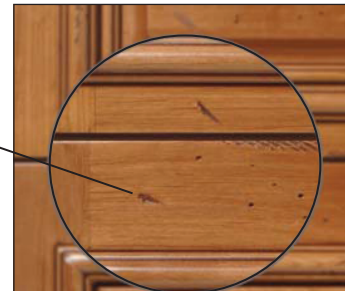
Rasp Marks



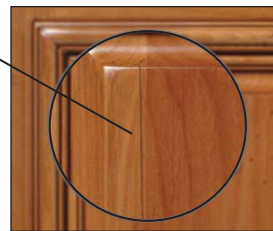
Wear Marks



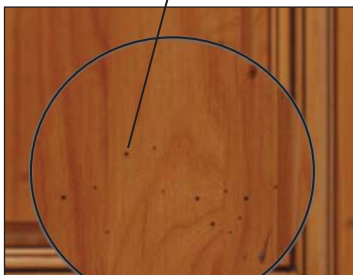
Nail Impressions



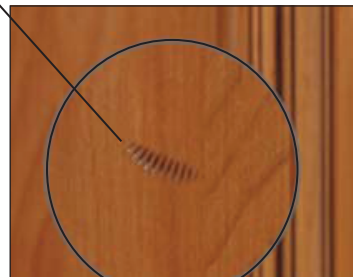
Nicks



Cracks



Wormholes

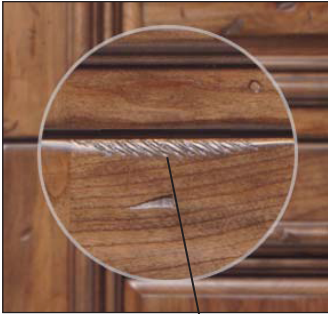


Screw Impressions

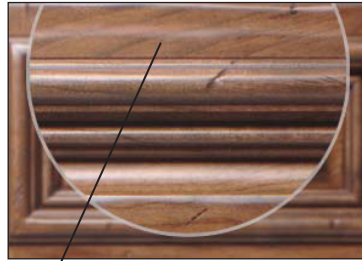
► For PRICING ► See Section **G13** in our Wholesale Pricing Catalog.

Renaissance Distressing

Rasp Marks



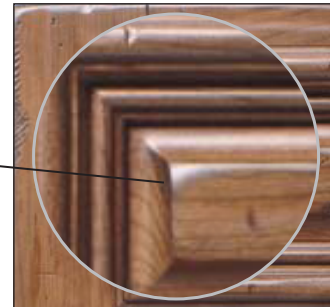
Orbital Waves



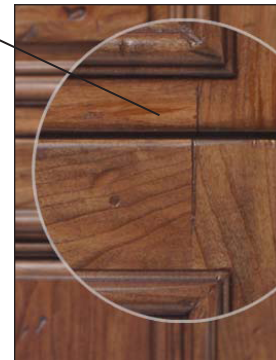
**Renaissance Distressing** is a “Look”

Unlike Simulated Distressing where you may pick or choose the type of distressing options you prefer, in ordering **Renaissance Distressing** you will find “all” of the options illustrated below.

Renaissance Distressing results in a more aged / or antique appearance with features being more pronounced than our “Heavy” Simulated Distressing.



Wear Marks



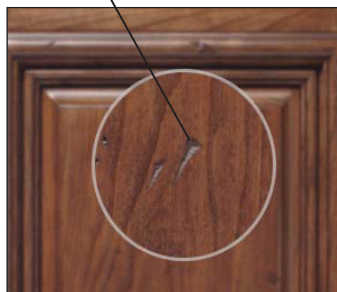
Cracks



Dents



Wormholes



Nicks

► For PRICING ► See Section **G13** in our Wholesale Pricing Catalog.

## Design Enhancements

## Distressing

### Simulated Distressing Options

	Light	Heavy		Light	Heavy
Screw Impressions	SD10	SD11	Cracks	SD60	SD61
Nail Impressions	SD20	SD21	Rasp Marks	SD70	SD71
Wear Marks	SD30	SD31	Orbital Waves	SD80	SD81
Nicks	SD40	SD41	Dents	SD90	SD91
Worm Holes	SD50	SD51			

G

### "Simulated" Distressing Notes

1) Pricing	Please see <i>Section G13</i> of the <b>Wholesale Pricing Catalog</b> .
2) Availability	<p>All Simulated Distressing options are available on all WalzCraft products constructed from solid wood only.</p> <p>Products that are entirely or partially composed of thin veneers are <b>not</b> available with the following options on their veneer portions only: Wear Marks, Rasp Marks &amp; Orbital Waves.</p> <p>MDF products are only available with Wear Marks and Orbital Waves, as the other options have a tendency to fracture the MDF material.</p>
3) Placement	Simulated Distressing options are randomly placed on the face of the product.
4) Options	<b>Light</b> or <b>Heavy</b> patterns are available and can be varied between options.
5) Glazing	Selecting a glaze to compliment your finish will enhance the distressed detail. The <b>Flow Pen Glaze</b> is <b>not an option</b> .

### "Renaissance" Distressing Notes

1) Pricing	Please see <i>Section G13</i> of the <b>Wholesale Pricing Catalog</b> .
2) Renaissance Distressing	<p>A "<b>Look</b>" that gives an aged or antique appearance to solid wood components.</p> <p>When ordering Renaissance Distressing you are choosing this "<b>Look</b>" <b>as an entire package</b> which includes all of the distressing patterns featured in the illustration on the previous page. Contrary to the way you order simulated distressing, these distressing options are <b>not</b> selected individually.</p> <p>This "<b>Look</b>" is much more pronounced than simulated distressing.</p> <p>Not an option with Veneered Flat Panels, MDF, Plywood Panels and some Moldings.</p>
3) Placement	Randomly placed on the face of the product and achieved by using tools such as an orbital sander, chisel, putty knife, razor, rasp, claw and hammer.
4) Glazing	Selecting a glaze to compliment your finish will enhance the distressed detail. The <b>Flow Pen Glaze</b> is <b>not an option</b> .
5) Wood Species	We recommend ( <i>but not a limitation</i> ) that you use one of the following wood species: Alder, Butternut, Cherry, Pine, Quarter Sawn Red or White Oak, Red Oak, Walnut and White Oak.
6) Samples	We highly recommend that a sample be ordered for approval prior to placing an order.

► For PRICING ► See *Section G13* in our Wholesale Pricing Catalog.

