

WalzCraft®

Door Installation Tool for Face Frame Cabinets

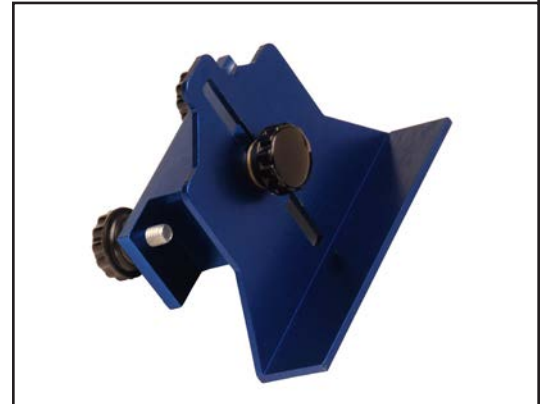
Attaching Doors to the Cabinet

Step 1.

The Door Installation Tool will assist in the mounting of hinged cabinet doors to the cabinet face frame and ensuring the correct alignment of all the doors to the cabinet openings.

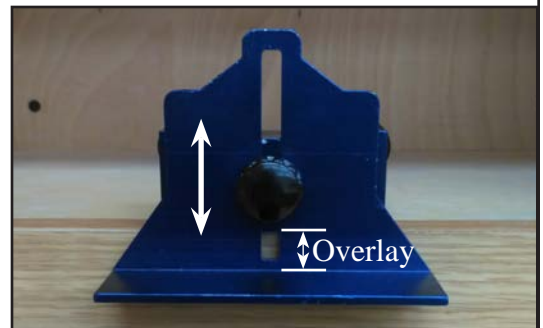
The doors must have a correct and consistent overlay of the openings all the way around.

**NOTE: Requires a drilling distance of 3 1/2" or greater from the bottom of the door to the center of the cup hole.
(To achieve bottom overlays of 0" to 1 1/2")**



Step 2.

First, loosen the single knob on the front of the tool and adjust the front plate up or down for the desired overlay setting and tighten the knob firmly.



Step 3.

This tool fits into the lower corner of the face frame opening on the side the door is hinged on.

A cross bar and thumb screw hold the tool in position.



Step 4.

With the door resting on the ledge created by this tool, the distance from the bottom of the door to the bottom of the face frame remains consistent.

The door is easily attached to the face frame with no further measuring.



All Steps Completed